



BaalSaathie



A STUDENT HEALTH BENEFIT PROGRAM

A student Benefit Program that focuses on thoroughly assessing the child followed by a detailed Intervention Plan, Follow up Sessions, Monthly Diet Charts and EMR (Electronic Medical Health Record).

WHAT WE DO

Empower each child to live a thriving life blended with a perfect balance state of Mind, Body & Soul via Holistic & Preventive Healthcare for the following domains:



**PHYSICAL
HEALTH**



**MENTAL
HEALTH**



**DIET &
NUTRITION**

HEALTH





PHYSICAL HEALTH

- Head to Toe Physical Assessment & Examination
- Dental Check up and Consultations
- Customized & Need Based Intervention Plans
- Workshops Addressing Child & Adolescent Issues
- Interactive Workshops & Expert Talk Sessions on Chronic Diseases Management
- Care Coordination by General Physician
- Follow Up Sessions
- Referrals

MENTAL HEALTH

- Pre-Assessment for Early, Middle Childhood & Adolescent Issues
- Psychosocial Behavior Assessment
- Carrying Out Psychological Standardized Assessment
- Detailed Intervention Plans
- Addressing Children with Special Needs
- Individual & Group Therapeutic Support
- Continuous Follow Up Sessions
- Comprehensive Career Assessments
- Interactive Workshops & Expert Talks on Identified Psychological Concerns
- Expressive Arts Therapy Sessions
- Referrals



DIET & NUTRITION

Our Diet & Nutrition is customized as per Individual Needs based on the following parameters:

- > Socio- Economic Factors
- > Geographical Factors
- > Required Nutritional Intake
- > Dietary Habits
- > Developmental Needs
- > Meal Evaluation
- > Nutritional Deficiencies / Disorders
- > BMI (Body Metabolic Index)
- > Lifestyle



INSURANCE & DISCOUNTS

- > Age Band (3 to 18 years)
- > Pre Hospitalization and Post Hospitalization
- > No Hospitalization required
- > Pre Existing Diseases Expenses Covered
- > Accidental Death or Permanent Disability RS 2 Lacs
- > Sponsor cover in case of Death and Job Loss will be covered up to 1.5 Lacs for school fee of deponent

Services	Yearly Min. Exp	Discount %	Saathee Saving
Experiential Workshops	12 X 1000	100%	12000
Head to Toe Physical Check Up	12 X 1500	100%	18000
Quarterly Diet Plan	12 X 1000	100%	12000
Health Insurance	50000	100%	50000
Psychological Counseling	12 X 1000	100%	12000
Dental Consultation	1 X 500	100%	500
Health Record Maintain	2000	100%	2000
Total Savings			106500

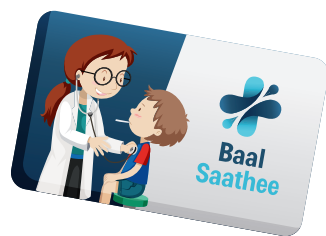


HEALTH CARD



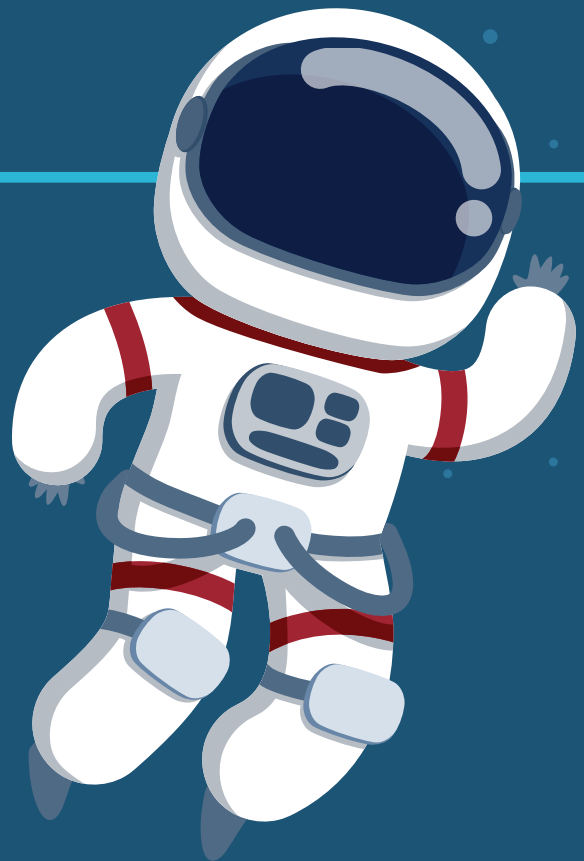
HEALTH CARD BENEFITS

- > Concise & Compiled Health History and Information
- > Easy to Access and Carry
- > Saves Times in Emergency life Threatening Situations
- > Helpful in Planning Guidelines for Future
- > Increased Accuracy and Reliability
- > Cashless Benefits for Medical Expenses (OPD etc.)



OTHER SERVICES

- > Abroad Educational Tour
- > Monthly Student's Magazine
- > Career Counseling
- > Training And Counseling for white collar and blue collar employees
- > Discovery Workshops for kids in school with Astronauts



PANEL OF EXPERTS

- > Clinical Psychologists
- > Special Educators
- > General Physicians
- > Child Psychologists
- > Staff Nurses
- > Dieticians & life Coaches
- > Support Staff Compounders
- > Interns



EXPERTS



FortunoSaathi

BaalSaathee

A Student Health Benefit Program

YuvaaSaathee

A Youth Health Benefit Program

PariwarSaathee

A Family Health Benefit Program

WorkSaathee

A Employee Health Benefit Program

FORTUNO SAATHI PVT. LTD.